

XGA

XGA is a CAE's developed software for the analysis and processing of the historical data archives.

It responds to the needs of whom, once the hydro-meteorological data from a monitoring environmental network are acquired, wants to conduct in depth statistical analysis.

Designed to allow the study and elaboration of large amounts of data, XGA is a fast, powerful and reliable instrument.

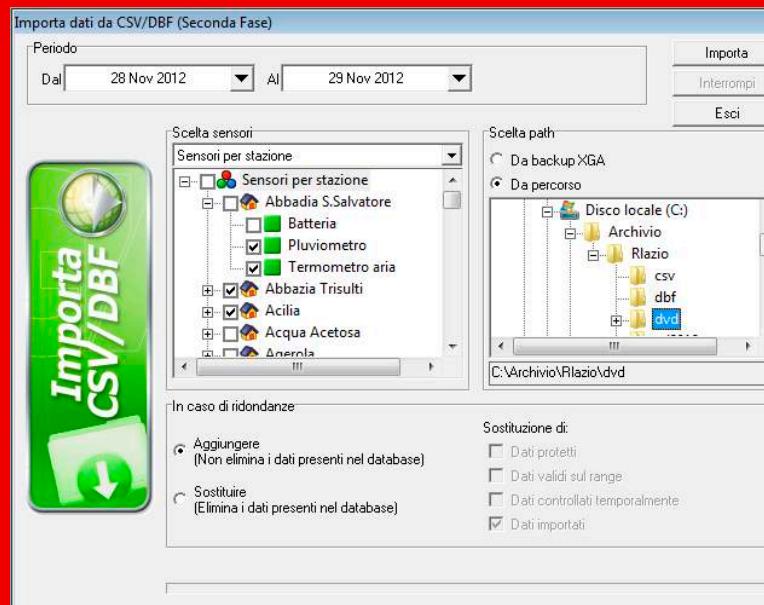
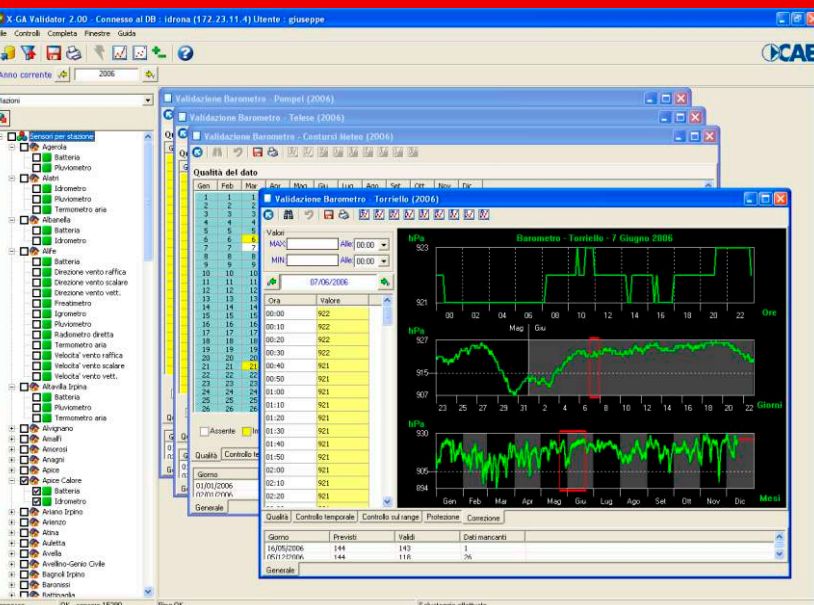
APPLICATION AND FUNCTIONS

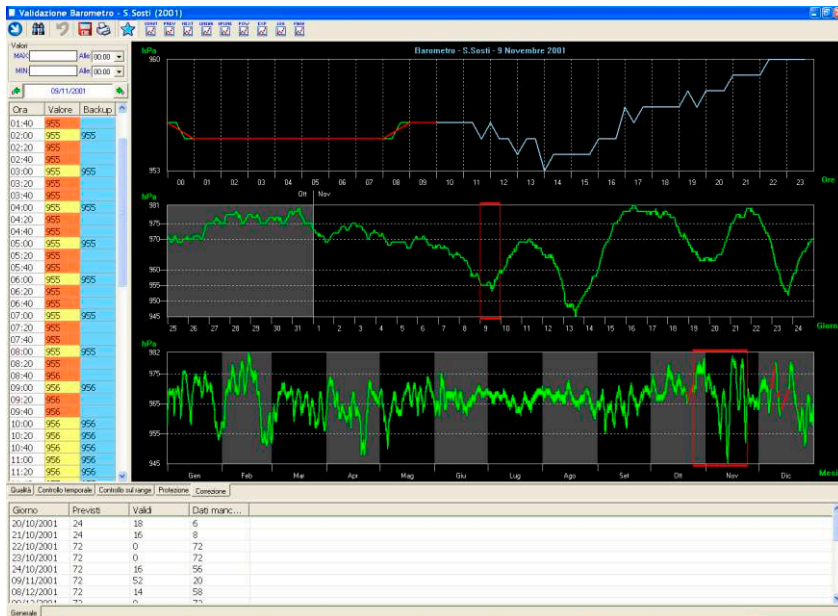
XGA is structured according to the principals of the modern client-server technology. It uses the relational database technology, that permits quick and effective management of large data bases including historical series of even thousands of data.

XGA is made by 3 distinctive and integrate applications named respectively XGA NAVIGATOR, XGA VALIDATOR, and XGA ADMINISTRATOR, each one giving the user the desired functionalities.

XGA NAVIGATOR is the XGA application that permits the qualified users to display the historical series, through both graphics and tables, as well as providing the possibility to create and calculate further historical series derived by differentiated elaborations and statistical analysis based on the type of sensor. XGA NAVIGATOR, moreover, allows the data exportation and importation as well as the printing of tables, graphics, reports and annuals.

XGA VALIDATOR is the instrument that permits the qualified users the validation, verification, completion, modification and protection of data contained in a given database. The program allows import and export of





data in .DVD format (CAE's proprietary format) within the working database. It also allows to import and process historical flow series, representing the down-flow scales at given cross sections.

XGA ADMINISTRATOR allows either creating, modifying or eliminating local or remote databases, as well as to manage entry authorizations allowed to the single user.

#	Data inizio campagna	Data fine campagna
1	2000/03/17	2010/12/31
2	2011/01/01	2015/03/31

#	Livello min	Livello max	Formula
1	0.00	6.00	0.00388-0.0115*h+2.15*h^2

Scala

Q: 77.33, 60.00, 40.00, 20.00, 0.01

L: 0.00, 0.55, 1.09, 1.64, 2.18, 2.73, 3.27, 3.82, 4.36, 4.91, 5.45, 6.00



CAE S.p.A-Via Colunga 20
 40068 San Lazzaro di Savena (BO) - Italy
 tel.: +39 051 4992711|fax: +39 051 4992709
 www.cae.it