

# PATROL

**Patrol** is an automatic 24H alarm diffuser surveillance system connected to a central CAE environmental monitoring system.

**PATROL** is the ideal tool to manage all the information saved by a hydro-meteorological station network to promptly activate a procedure of alarm setting and diffusion.

## APPLICATION AND FUNCTIONS

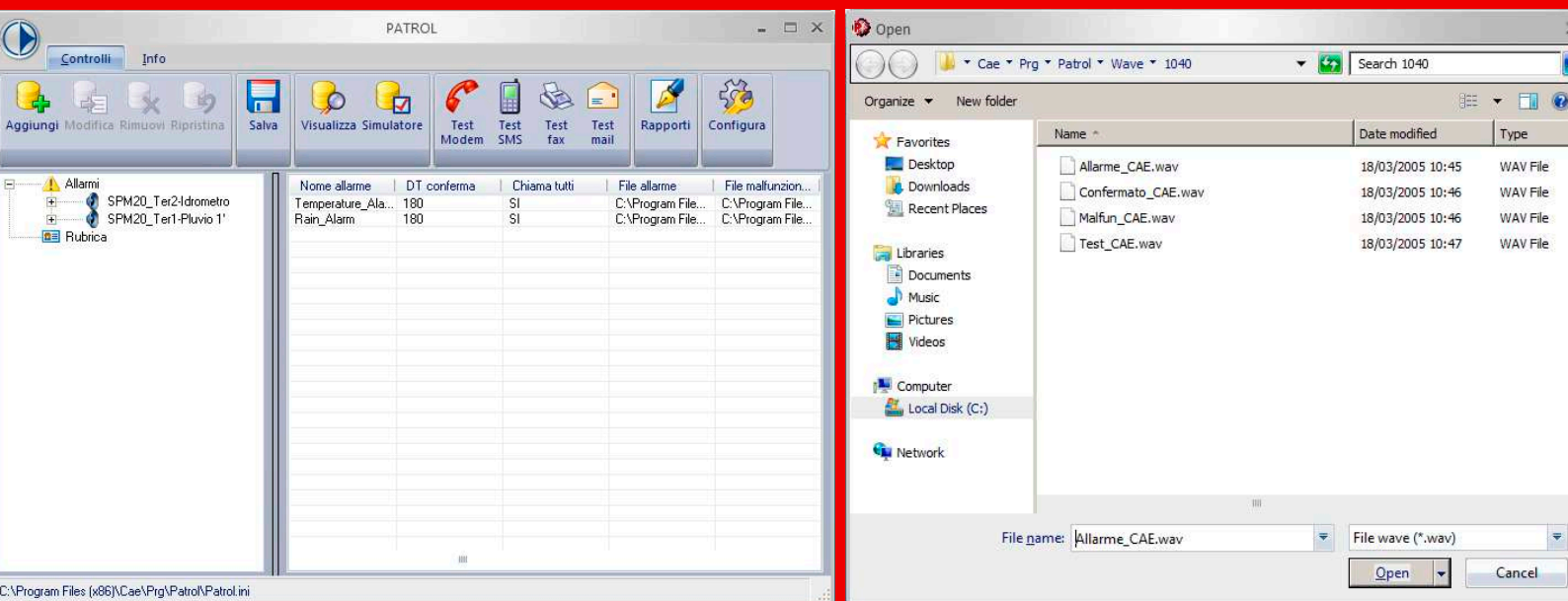
By compiling simple configuration forms, **PATROL** is able to deliver (via telephone, GSM or other) an advice chosen by the user as either vocal synthesis or as a text message, to inform about the alarm state activation or the notification of missing data.

The messages are delivered to one or more traceable operators registered on a pre-compiled telephone book. During operation, it is possible to activate or de-activate the alarms and to modify the traceable calling list.

In addition, it is also possible to set a time (expressed in minutes) for the anomaly persistence before sending a message and a non-repetition alarm time once the software has received the confirmation of response from the user.

The user that receives the message can listen to it repeatedly, confirming reception by sending a tone from the numeric pad on the telephone.

In case a listed user does not confirm the alarm response, or the phone number is engaged or not reachable, the program will pass automatically to the next traceable number on the pre-compiled list.



Simulazione

DVD: C:\Archivio\Test\Yd2010\cmd201011\20101119.dvd

Cerca 09:00 HH MM Vai

Nome Allarme	Nome Condizi...	%	Per...	Nome Stazione	Nome Sensore	All. Val.	Valore	All. Trend.	Trend	Pre...	Ora
Temperature_...	Temperatur...	0	10	SPM20_Ter1	Taria Piem.	<=20,0	7,9		2,0	NO	09:00
				SPM20_Ter2	Taria Piem.	>=20,0	7,8		2,4	NO	09:00
				SPM20_100	Taria Piem.	<=20,0	N.P.		N.P.	SI	08:50

Cambia colore: Cambia Normale In allarme N.P. Sensore non presente Simula Esci

Modifica Allarme

Nome Allarme: Museo delle Barche

Proprietà di chiamata

Tempo di attesa in caso di conferma: 180 minuti

Chiama sempre tutti  Fermati al primo che conferma

Contatti

Telefono SMS Fax

Rubrica Rubrica Rubrica

Cognome	Nome	Telefo...	SMS	Fax	Disabil.
Casadei2		SI			
Rossi		SI			
Bianchi		SI			
Franchini		SI			
Giannini		SI			
Paolini		SI			
Verdi		SI			
...		SI			

Messaggi

Percorso File wave per allarme sui dati  
C:\Programmi\Cae\Patrol\musedq.wav Riproduci Cerca

Percorso File wave per allarme sul funzionamento  
C:\Programmi\Cae\Patrol\Malfun\_CAE.wav Riproduci Cerca

Percorso File wave di conferma  
C:\Programmi\Cae\Patrol\conferma voce marzaduri. Riproduci Cerca

Crea File

Testo SMS

File da inviare via fax

Cerca

Processo da eseguire

Cerca

Disabilita Allarme OK Annulla

On setting the alarms it is possible to determine if the users have all to be called or if the first to respond breaks the chain. In the case that all have to be called, the program does three attempts for each user, would he do not reply the first call.



innovation for a safer world.

CAE S.p.A-Via Colunga 20  
40068 San Lazzaro di Savena (BO) - Italy  
tel.: +39 051 4992711|fax: +39 051 4992709  
www.cae.it