

MAPS

Entirely conceived and realized by CAE, **MAPS** is the add-on for VIEW capable of visualize in a georeferenced cartographic mode the monitoring peripheral stations and the respective data. MAPS's functions are totally integrated in VIEW, achieving a unique working environment.

The main window of MAPS&VIEW (that's the name of the fusion between VIEW and MAPS add-on) shows Italy's geographic map where, after loading a valid configuration, are visualized a set of dots representing the stations installed on the territory.

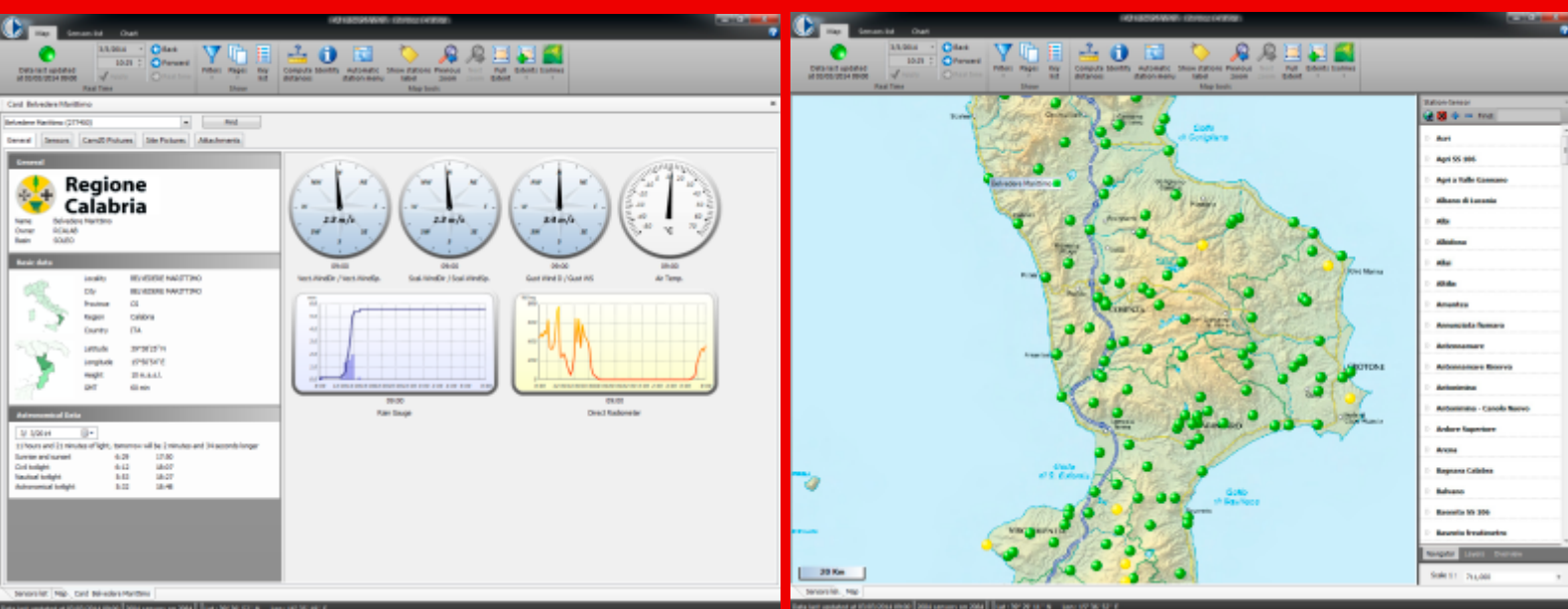
Inside MAPS&VIEW are included all VIEW's features: tables, charts, sensors list, are always one click away.

APPLICATIONS AND FUNCTIONS

MAPS & VIEW allows to localize the monitoring stations on the map allowing their georeferencing. They are represented as bidimensional or tridimensional icons setttable by the user. MAPS & VIEW divides the stations as type of application (eg. hydrometric, meteorological, rainfall) and using different symbols.

These symbols stain differently depending on the station sensors status depending by alarm threshold setting (green for normal, yellow for state of attention, orange for early-warning and red for alarm state); for their localization are used the registry, as maps are georeferenced.

Much information are accessible without having to browse through complicated menus, thanks to the "tooltips", that are bezel that lists the sensors present in the selected station, specifying some important information like the name, the status and their last value. Picking a sensor will be showed a preview of the values graphic referred to the last 24 hours.



MAPS & VIEW also allows to visualize the station board, which is a detailed description of the station in question, with his name, registry data, sensors and related graphics, site's CAE photos and any attachments or user's notes. If the station is equipped with CAM20 you can see the photo archive. Profiles of the stations are temporarily open are up to 10 and are displayed as folder tabs like all the other windows.

The software interface is characterized by the Ribbon Bar, that replace the old style menu, that allow to group the buttons by topic; it can contain different objects like buttons, menus and icons.

Three panels, each one dedicated to different information: one for the Map, another one for the Sensors list and the last one for the Graphic.

The panels can be repositioned on the screen, visualized as folders or made floating depending on the operator's habits and necessities.

MAPS&VIEW is heavy configurable according to the operator's wishes: that's because is the operator himself the pivot of ambient monitoring system, and everything must be easy-fitting for his needs.

Map's visualization and the visualization of particular layers, permits to the user to configure the workspace.

For a detailed description of the features of the Sensors and Chart List panels, see the description of VIEW.

