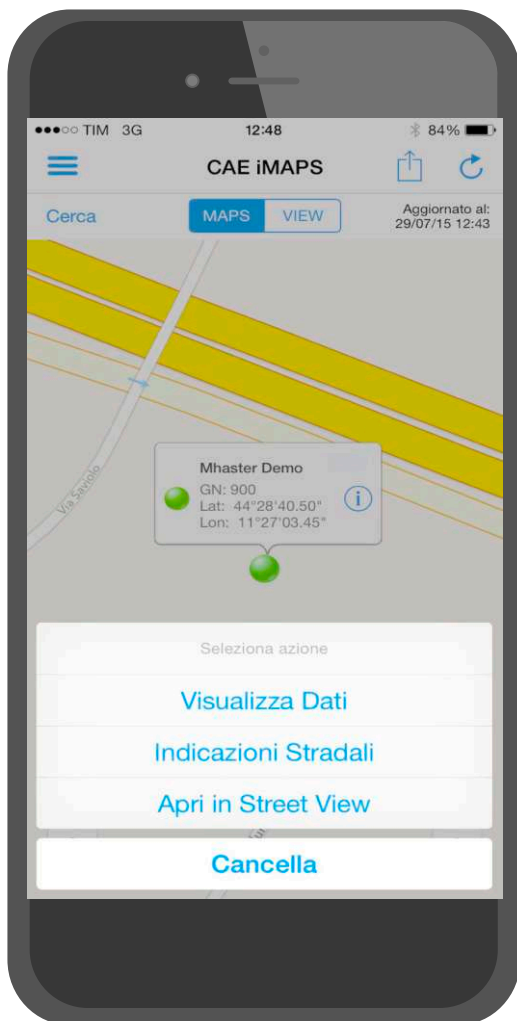


# iMAPS

CAE has developed an application ("app") for **Apple' smartphones and tablets**: the application, "**CAE iMAPS**" allows **accessing the network's data in both tabular and map version**.

The map used is the one provided by Apple, which comes with every iOS device. The georeferenced visualization of the monitoring stations can be performed on standard maps, satellite or hybrid version. The images displayed, downloaded from the Internet in real time, varies in function of the zoom level applied.

By accessing the data in the table format you can display the latest data collected. From the sensor list you can also graph the sensors' value: the **graph** shows at the same time both trend and table values. The number of the days shown in the graph is defined in the configuration tab and it can be set from one to seven.



Among this new version's features, there is the possibility to make **selective calls**, based on the access level of the user which is defined in the configuration page by the Administrator. By doing so, the user can request the station an **instant upgrade** of the element chosen (you can also check the list of the selective calls performed in the last 7 days) and read it on its mobile device. Another important additional feature is the possibility to display alarms due to exceeding of thresholds defined by the administrator of the system.

In order to maximize ease of use, all the pages are provided with the **sharing options button**, that allows you to share the content displayed by sending it directly from the device: which is usually the print screen or in case of a graph, a csv file containing the data of the elements is also sent. The user can choose from multiple sharing options in order to maximize effectiveness.

**The download and installation can be completed from the Apple Store.** In order to work, the application CAE iMAPS requires an internet connection whose speed and reliability is the basis for a proper functioning of the app itself. Through the configuration page is possible to set the connection parameters to the control monitoring room and define the main options of the program: in order to display the data of your network, the user must prompt the credentials configured using DataLife.

TIM 3G 12:48 84%

CAE iMAPS

Cerca MAPS VIEW Aggiornato al: 29/07/15 12:43

Stazione	Elemento	Val.	UM	Incr.	Data/Ora
Mhaster Demo	Corrente Cella	0.00 A		-0.82	12:20
Mhaster Demo	Corrente Batteria	0.646 A		0.067	12:20
Mhaster Demo	Velocità Vento Scalare	2.6 m/s		0.0	12:20
Mhaster Demo	Direzione Vento Scalare	219 °		NV	12:20
Mhaster Demo	Velocità Vento Raffica	6.2 m/s		0.8	12:20
Mhaster Demo	Direzione Vento Raffica	231 °		NV	12:20
Mhaster Demo	Velocità Vento Vettoriale	2.0 m/s		-0.1	12:20
Mhaster Demo	Direzione Vento Vettoriale	219 °		NV	12:20
Mhaster Demo	Temperatura Aria Media	31.9 °C		1.4	12:20
Mhaster Demo	Temperatura Aria Min	31.6 °C		1.2	12:20

